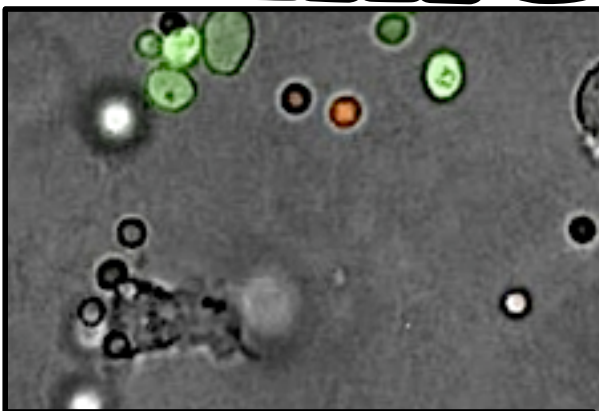
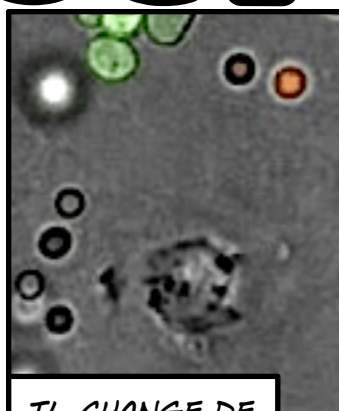


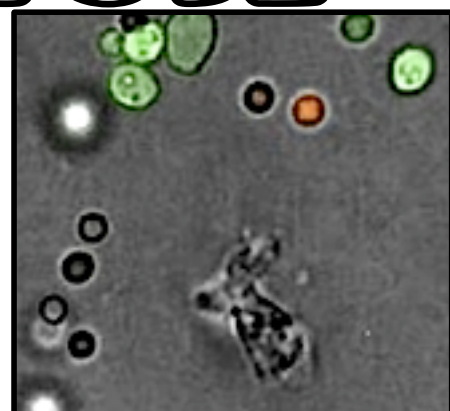
PHAGOCYTOSE



UN MACROPHAGE PATROUILLE...

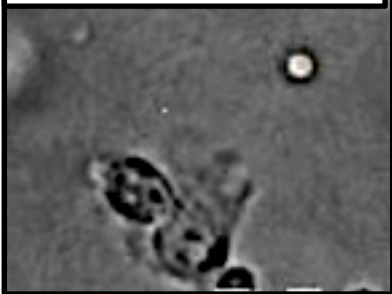


IL CHANGE DE
FORME.

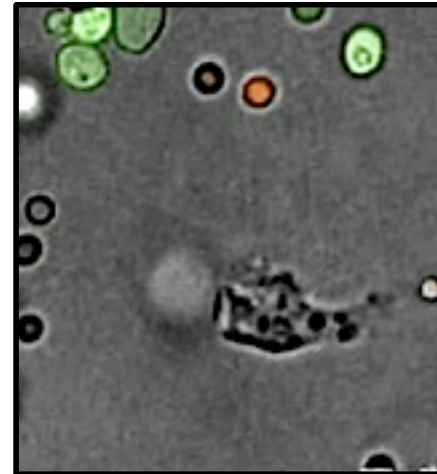


CIBLE DÉTECTÉE...

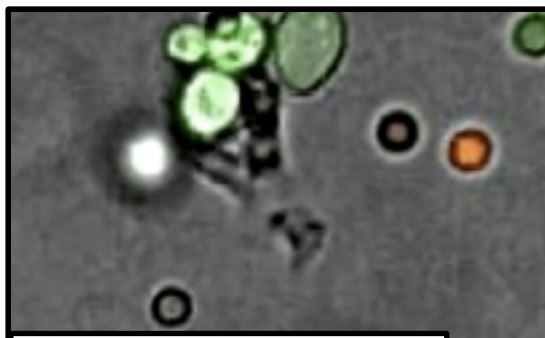
CERTAINES ZONES DE
LA MEMBRANE
PRENNENT LA FORME
DE TENTACULES...



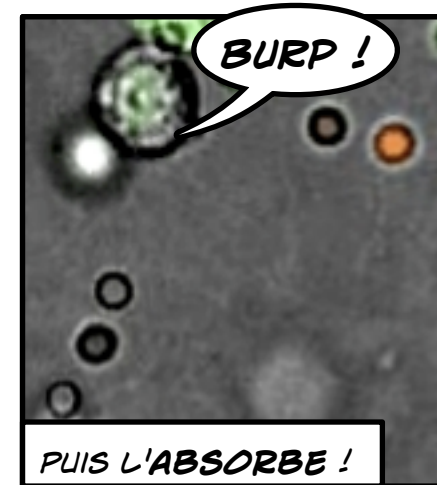
LA CELLULE SE
DIRIGE VERS
L'ENVAHISSEUR,
(ICI COLORÉ EN
VERT).



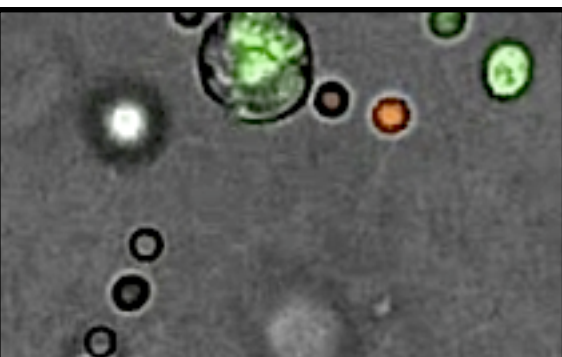
LA MEMBRANE
S'ALLONGE VERS
LA "CIBLE".



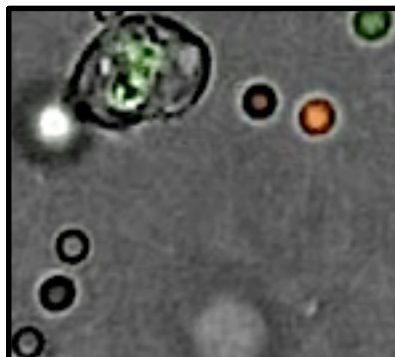
LE MACROPHAGE ACCOLE
SA MEMBRANE CONTRE
L'INTRUS...



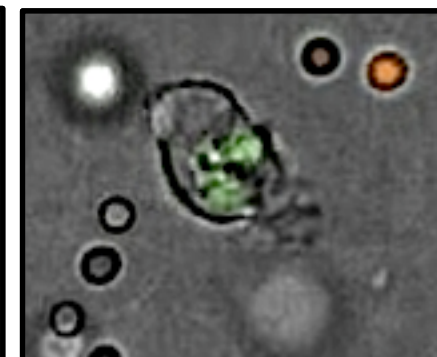
PUIS L'ABSORBE !



TROIS INTRUS SONT ABSORBÉS
DANS LE CYTOPLASME



PUIS DIGÉRÉS !



LA CELLULE REPREND
SON DÉPLACEMENT.